

## Storm Surge Hazard Map

This map shows the flood risk areas, flood depth, duration of inundation, evacuation sites, etc. in the case of river flooding due to the effect of storm surge along the Tokyo Bay coast (Tokyo section). It reflects the map of the storm surge flood risk areas (Tokyo) associated with the assumed maximum storm surge specified by the Flood Control Act.

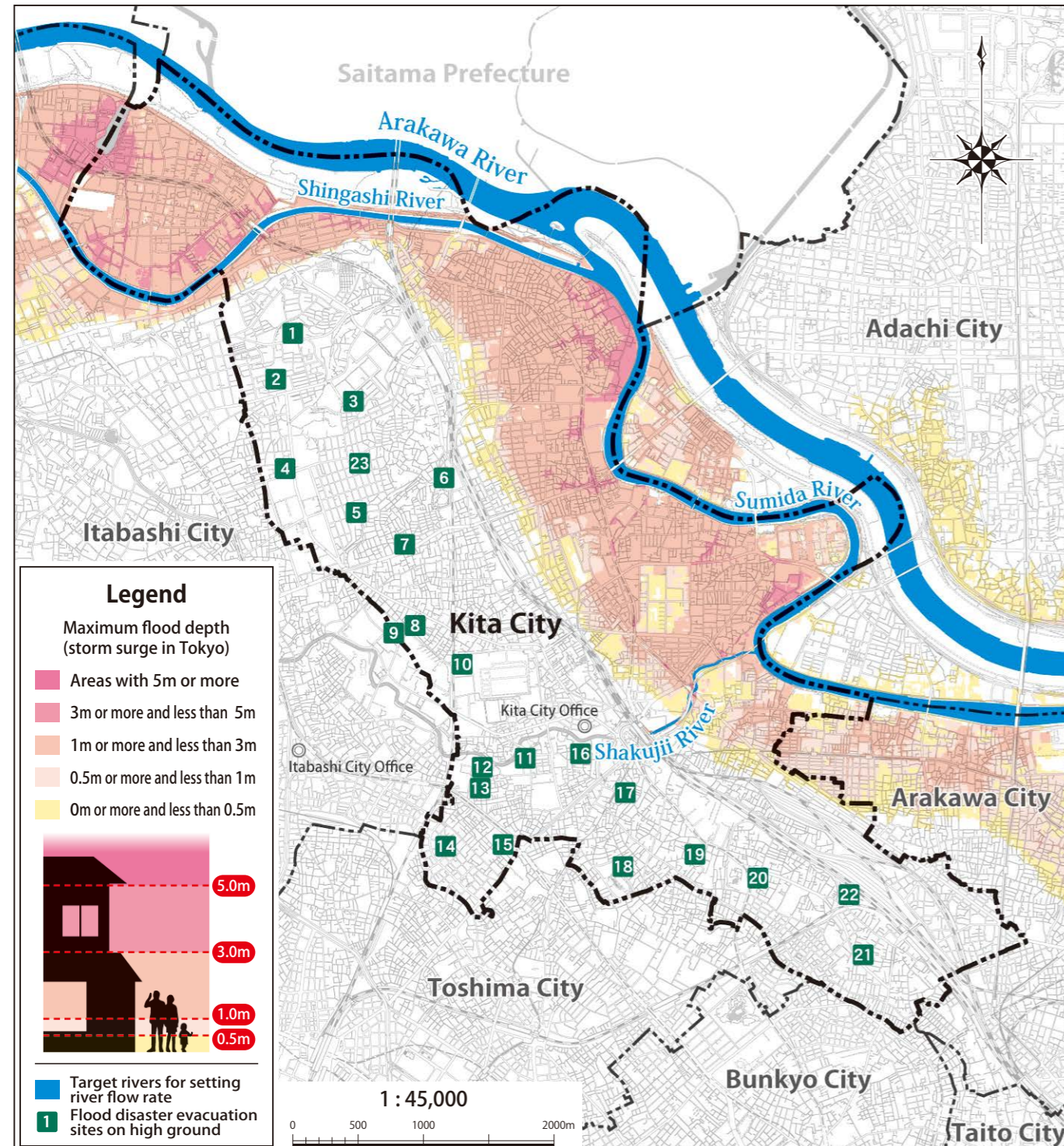
\*See page 5 for the cause of storm surge.

### Evacuation behaviors in the flood risk areas

Areas, etc.	Evacuation behaviors
Common to all flood risk areas	In the case of an approach of a large typhoon that is expected to cause a storm surge, the risk of the Arakawa River flooding will also be high. Therefore, in principle, evacuation behaviors will be the same as those taken in the event of flooding of the Arakawa River. *See page 8 for evacuation behaviors in case of flooding of the Arakawa River.

### Storm Surge Hazard Map (flood depth)

This map is a secondary use of a map that was compiled and processed using basic map information with the approval by the Director-General of the Geospatial Information Authority of Japan.



### Flood disaster evacuation sites on high ground

No.	Facility name	Location	No.	Facility name	Location
1	Kirigaoka J.H. School	2-6-11 Kirigaoka	13	International French School in Tokyo Annex	5-44-15 Takinogawa
2	Kirigaokasato Elem. Sch.	1-10-23 Kirigaoka	14	Yabata Elem. School	7-12-17 Takinogawa
3	Akabanedai Nishi Elem. Sch.	2-1-34 Akabanedai	15	Takinogawa Daini Elem. Sch.	6-19-4 Takinogawa
4	Inatsuke J.H. School	6-1-4 Akabane-nishi	16	Kita City Office, Government Office for Takinogawa	2-52-10 Takinogawa
5	Umenoki Elem. School	2-21-15 Nishigaoka	17	Takinogawa Daisan Elem. Sch.	1-12-27 Takinogawa
6	Former Shimizu Elem. Sch.	4-5-17 Jujo-nakahara	18	Nishigahara Elem. School	4-19-21 Nishigahara
7	Oji Daisan Elem. School	5-2-3 Kami-jujo	19	Asuka Junior High School	3-5-12 Nishigahara
8	Oji Daigo Elem. School	2-18-17 Kami-jujo	20	Takinogawa Elem. School	1-18-10 Nishigahara
9	Former Fujimi J.H. School	3-1-25 Kami-jujo	21	Tabata Elem. School	5-4-1 Tabata
10	Jujo Fujimi J.H. School	1-9-33 Jujodai	22	Former Tabata J.H. School	6-9-1 Tabata
11	Takinogawa Momiji Elem. Sch.	3-72-1 Takinogawa	23	Nishigaoka Elem. School	1-12-14 Nishigaoka
12	Takinogawa Koyo J.H. Sch.	5-55-8 Takinogawa			

As of December 1, 2023



### Storm Surge Hazard Map (inundation duration time)

This map is a secondary use of a map that was compiled and processed using basic map information with the approval by the Director-General of the Geospatial Information Authority of Japan.

