



Global Thinking

No. 44 March 2013

Edited and issued by the General Affairs Section (International Affairs), General Affairs Division, Kita City Office
1-15-22 Oji-honcho, Kita City, Tokyo 114-8508 Tel: 03-3908-9308 Fax: 03-3905-3423

P2 and P3:
How to Dispose of
Garbage



P4:
Overnight Homestay
Program Reports



What Are the Community Promotion Offices and Fureai Halls?



We understand that foreign residents living in Japan have a lot of questions, such as how to obtain local information and how to build good relationships with neighbors. In this issue, we will describe the Community Promotion Offices, which support community activities and spread local information, and the Fureai Halls, where you can become involved in community activities with your neighbors.

1. Community Promotion Offices

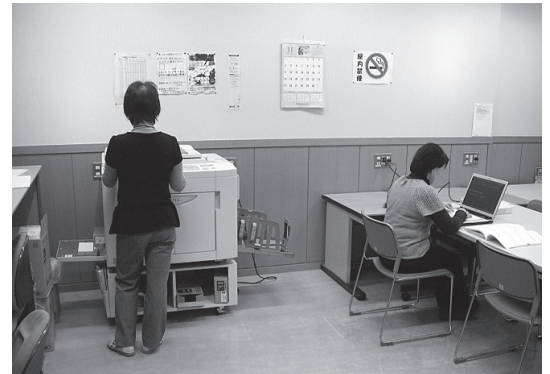
○The Role of the Community Promotion Offices

- (a) Support local activities of the town councils, residents associations, youth committees, and local Red Cross groups.
- (b) Provide a venue for NPO groups and volunteer groups.
- (c) Foster links between city residents and the city administration, working towards more cooperative ties.
- (d) Gather and spread local information and provide a venue for conducting exchange activities so that the local community is revitalized.

○Using the Activity Corners and Meeting Rooms

The facilities are established as a center for community activities. To use them, groups must register first. Registration is restricted to public groups designated in the Local Autonomy Act, NPOs, and volunteer groups (excluding governmental or religious groups), and these groups must fulfill such conditions as having at least three members; one or more of whom must live, work, or go to school in Kita City; and must include one adult.

The printer in the activity corner can be used. (The actual cost is charged.)



The activity corner in a typical Community Promotion Office

○Inquiries

Please contact your local Community Promotion Office

2. Fureai Halls

○The Role of Fureai Halls

- (a) To promote community activities in the neighborhood
- (b) To enhance the leisure and culture of the elderly



The gathering corner of a typical Fureai Hall

○Use of Gathering Corners

The “gathering corners” can be used for a fee. Please note that due to resident priority rules, the application dates and usage fees vary for Kita City residents and nonresidents. (Kita City residents can apply up to three months in advance, and nonresidents can apply up to two months in advance.) Kita City residents must bring some form of documentation that shows their address (such as a driver’s license or health insurance card) at the time of application. For more information, please contact your local Fureai Hall.



Japanese-style gathering corner

○Inquiries

Please call your local Fureai Hall.

- ☆ Please read the city guidebook *Finding Your Way around Kita City* and check the Kita City website for the list of local Community Promotion Offices and Fureai Halls.

Have You Grown Accustomed to Life in Japan?

How to Dispose of Garbage Properly in Kita City

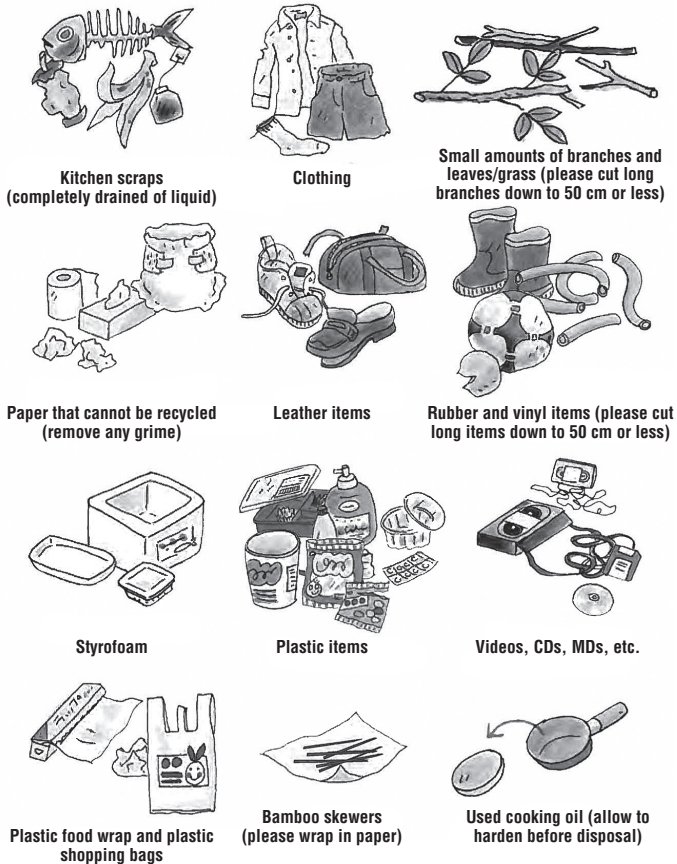
Rules for Sorting Garbage

In Japan, there are a lot of confusing matters and social rules that must be observed in everyday life. In this issue, we will describe the rules for disposing of garbage so that you can enjoy life comfortably with your neighbors.

Rules for Sorting Garbage

Garbage must be sorted according to category—burnable garbage, unburnable garbage, and recyclable resources. Each type is collected on designated days.

1. Burnable Garbage (collected twice a week)



2. Unburnable Garbage (collected twice a month)



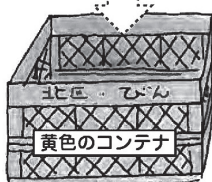
3. Bottles, Cans, and PET Bottles (collected once a week)

Items are collected at the garbage collection station (where the collection containers and nets are located). Do not place items in a bag; lightly rinse them out and place them directly in the container or net.

Notes: 1. Dispose of the caps as burnable garbage or unburnable garbage, depending on the material they are made of.

2. Items that will not be collected: any that have leftover juice or garbage inside, that contained oil or chemicals, as well as any that are soiled.

Bottles/Cans Bottles/cans for food or beverages

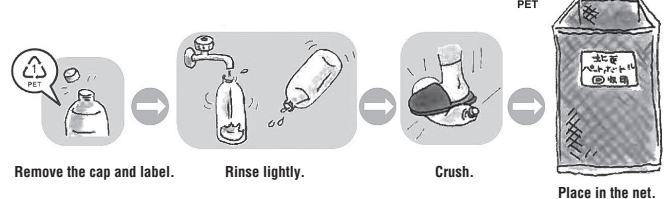


Yellow container



Blue container

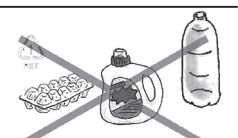
PET bottles Bottles with the identifying PET mark



Note: Also collected in front of supermarkets and convenience stores.

Please dispose of the following items as burnable garbage:

- ◆ Colored plastic PET bottles
- ◆ Items with the identifying PET mark that are not bottles
- ◆ Bottles without the identifying PET mark



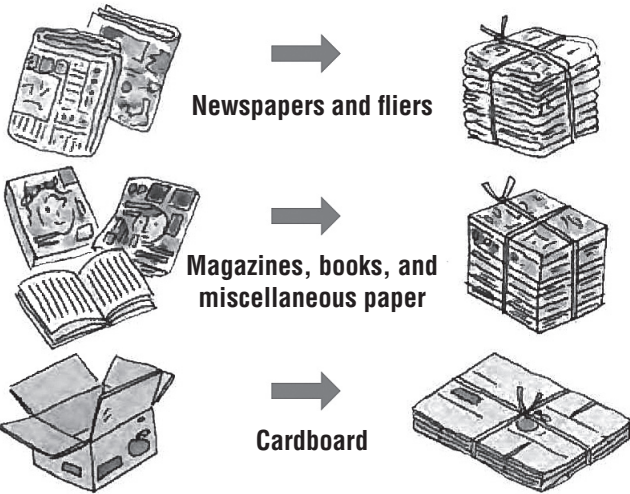
Colored plastic PET bottles
Items without the identifying PET mark

4. Used Paper (collected once a week)

Note: Collected even on rainy days.

Bundle with string according to type before disposal.

Do not bundle with adhesive tape.



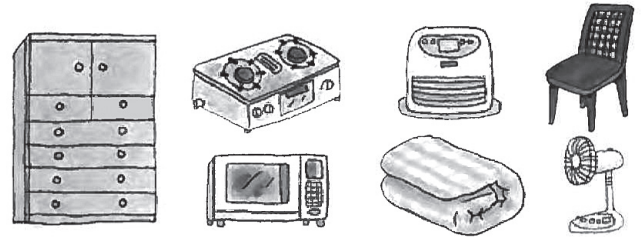
Items That Are Not Collected as Used Paper (dispose with burnable garbage)
Adhesive tape, items made of material other than paper (such as plastic film), paper cups, plastic coated paper, thermal paper/carbon paper, and paper that is dirty (with oil, etc.)

Note: Please cooperate with neighborhood groups in their used paper collection drives.

5. Oversized Garbage (please call to arrange a pickup date)

Items as large as or larger than a cube of 30 cm on all sides are considered oversized garbage.

Please call in advance to arrange pickup.



Application (to arrange a pickup date or for information on fees)

Oversized Garbage Reception Center
Tel: 5296-7000

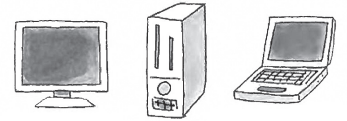
Note: Oversized items that were used in business cannot be collected.



There is a fee for the collection of oversized garbage.

• Recycling of Computers and Household Appliances

A recycling fee is required for used personal computers that do not bear the identifying recycling mark. Please call the product's manufacturer concerning collection procedures. In addition, used TVs, refrigerators/freezers, air conditioners, and laundry machines/dryers must be recycled by law. To dispose of these items, you must either ask the store where you originally purchased the item or the store where you are buying a replacement to handle your used appliance. If you are unable to get a store to help you, please call the Household Appliance Recycling Reception Center.



• Hazardous/Dangerous Items (such as gas cassettes, kerosene, and chemicals)

The city does not collect items that are difficult to handle (such as automobiles [including parts], motorcycles, tires, fire extinguishers, soil, liquids, bricks, and concrete blocks). Please consult Kita City Waste Collection Office.



Please observe the following rules:

1. Dispose of items according to type at the garbage collection station no later than 8 a.m. on the designated collection day. The collection schedule varies depending on the neighborhood where you live.
2. There is a collection fee if you have a lot of garbage (five or more 45-liter garbage bags full). Please consult the Waste Collection Office.
3. Do not leave items that are not for collection in or near the garbage collection station.
4. Dog and cat carcasses are collected for a fee. Please consult the Waste Collection Office.
5. When disposing of business-related burnable or unburnable garbage, or used paper, please attach the Kita City garbage collection fee sticker.

Notes: 1. Please be sure to consult the Waste Collection Office concerning other garbage-related questions rather than deciding on matters yourself, such as whether certain items can be collected, whether there is a pickup service for the item, and whether there is a collection fee.

2. Illegal garbage disposal is punishable by law (five years or less in jail, or a fine of ¥10,000,000 or less, or both).

Inquiries:

Recycling and Waste Management Section,	Tel: 3908-8539
Kita City Waste Collection Office,	Tel: 3913-3141
Household Appliance Recycling Reception Center,	Tel: 5296-7200



Overnight Homestay Program

This program began in 1995, and provides an opportunity for foreign students to experience Japanese life, customs, and culture firsthand by having them visit a typical family living in Kita City. The program also gives host families an opportunity to deepen their understanding of foreign cultures by interacting directly with a person from a foreign country.

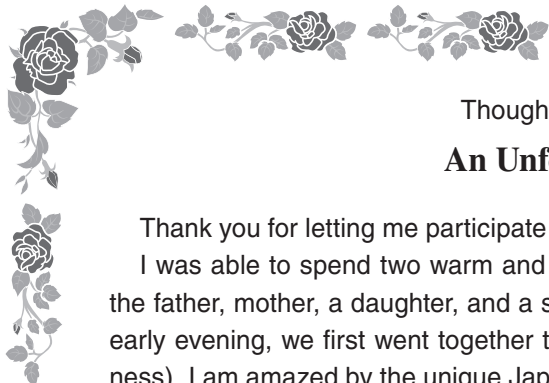


Thoughts from a 2011 Host Family

We Made a New Friend

Although we were not sure what to do as a host family at first, we simply always included our guest in our everyday activities. After she finished with her part-time job in the early evening, we left together to visit a hot spring. It was extremely crowded because it was during the New Year holiday period, but since she had wanted to go she was very happy. After returning home, we had *osechi* (New Year's food), and she told us about the differences between the Japanese and Chinese cultures, as well as Chinese history, and her hometown using a map. My children enjoyed this as well. We also had a lot of fun playing cards until late into the night. The next day we relaxed and had a late breakfast, and then went out to visit Nishi-Arai Daishi Temple and the shopping mall. After having an early dinner (Nepalese curry), we took a leisurely drive and dropped her off near her house. My husband and my children—and of course I as well—hope to continue our friendship.

It was a precious experience to be able to make a new friend during the New Year.



Thoughts from a Foreign Student

An Unforgettable Experience

Thank you for letting me participate in the homestay program.

I was able to spend two warm and happy days. There were four people in my host family: the father, mother, a daughter, and a son. Since the first day of my homestay started from the early evening, we first went together to a spa called Shichifuku-no Yu (Bath of Seven Happiness). I am amazed by the unique Japanese custom of *hadaka no tsukiai* (naked relationship). Once you take a bath together with someone—even someone you have only just met—that person becomes a friend without anything in the way. We later went back to my host family's house and had *osechi* (New Year's food) together. The dishes my host mother made were really delicious. At night, I slept comfortably on a bed that was so beautifully decorated it looked like a princess's bed. The following day, we made our New Year's pilgrimage together to Nishi-Arai Daishi Temple. I prayed very hard that my wishes would come true. I was deeply moved when my host mother gave me a good luck charm for my studies. She is like my mother.

I am glad to have met my host family. I will never forget them.



Announcements from the International Affairs Subsection, General Affairs Section, Kita City

- ★ The editorial meeting for *Global Thinking* No. 45 is scheduled sometime in April. We will make announcements about it on an ongoing basis.
- ★ Kita City Pray for Peace Week is scheduled from August 6 to 8. We hope many people will participate in this event.