



Global Thinking

No. 48 March 2015

Edited and issued by the General Affairs Section (International Affairs), General Affairs Division, Kita City Office
1-15-22 Oji-honcho, Kita City, Tokyo 114-8508 Tel: 03-3908-9308 Fax: 03-3905-3423

P2-3: In this issue, we describe garbage collection procedures for foreign residents.
P4: International Exchange at the Hometown Kita City Citizens' Festival
A Request to All Dog Owners

Announcement of New Location

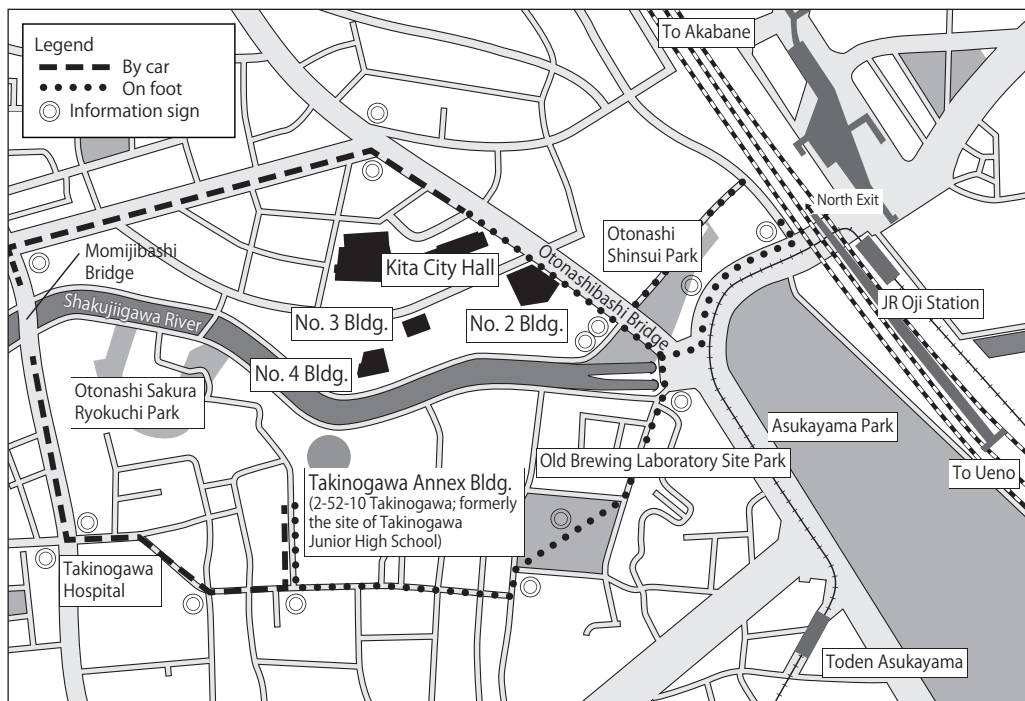
The Secretariat to the Board of Education and Education Advisory Office (5-2-8 Oji), formerly located in Kita City Hall No. 2 Building, have been moved to the Takingogawa Annex Building. The secretariat handles procedures related to municipal elementary and junior high schools.

● New Location

Takinogawa Annex Building
2-52-10 Takingogawa (formerly the site of Takingogawa Junior High School)
A ten-minute walk from JR Oji Station's north exit



● Illustrated Guide



● Free Shuttle Bus

A free shuttle bus makes one round every hour between Kita City Hall and the Takingogawa Annex Building.



Hours

Kita City Hall main entrance ⇒ Takingogawa Annex Building	Departs every hour, on the hour	9:00 a.m. to 4:00 p.m.
Takinogawa Annex Building ⇒ Kita City Hall main entrance	Departs every hour, half past the hour	9:30 a.m. to 4:30 p.m.

The telephone number has changed as follows:

Second floor: School Advisory Office, Tel: 03-3908-1237, Fax: 03-3908-9373

Third floor: Education Advisory Office Bullying Consultation Hotline, Tel: 03-3905-3110, Fax: 03-3908-1327

Note: There is no change in the telephone and fax numbers for the Educational Guidance Section's Special Needs Education Subsection.

Have You Grown Accustomed to Life in Japan?

In this issue, we describe garbage collection procedures for foreign residents.



Rules for Sorting Garbage

In Japan, there are a lot of confusing matters and social rules that must be observed in everyday life. In this issue, we will describe the rules for disposing of garbage so that you can enjoy life comfortably with your neighbors.



Rules for Sorting Garbage

Garbage must be sorted according to category—burnable garbage, unburnable garbage, and recyclable resources. Each type is collected on designated days.

1. Burnable Garbage (collected twice a week)

Kitchen scraps (completely drained of liquid)

Clothing

Small amounts of branches and leaves/grass (please cut long branches down to 50 cm or less)

Paper that cannot be recycled (remove grime)

Leather items

Rubber and plastic items (please cut long items down to 50 cm or less)

Styrofoam

Plastic items

Videos, CDs, MDs, etc.

Bamboo skewers (please wrap in paper)

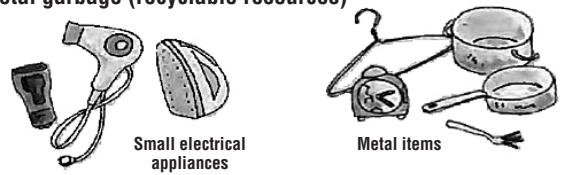
Used cooking oil (allow to harden before disposal)

Plastic food wrap and plastic shopping bags

2. Unburnable Garbage (collected twice a month)

Note: Place items in a separate bag from metal garbage and other unburnable garbage.

Metal garbage (recyclable resources)



Other unburnable garbage



3. Bottles, Cans, and PET Bottles (collected once a week)

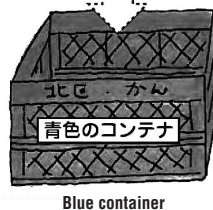
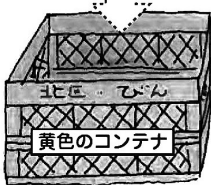
Items are collected at the garbage collection station (where the collection containers and nets are located). Do not place items in a bag; lightly rinse them out and place them directly in the container or net.

Notes: 1. Dispose of the caps as burnable garbage or unburnable garbage, depending on the material they are made of.

2. Items that will not be collected: any that have leftover juice or garbage inside, that contained oil or chemicals, as well as any that are soiled.

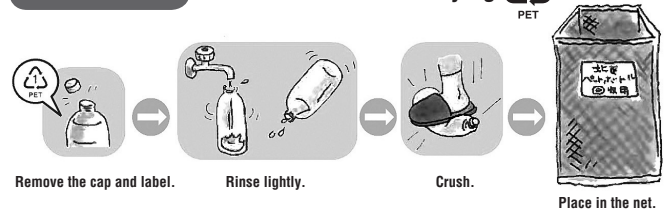
Bottles/Cans

Bottles/cans for food or beverages



PET bottles

Bottles with the identifying PET mark



Note: Not collected in front of supermarkets and convenience stores.

Please dispose of the following items as burnable garbage:

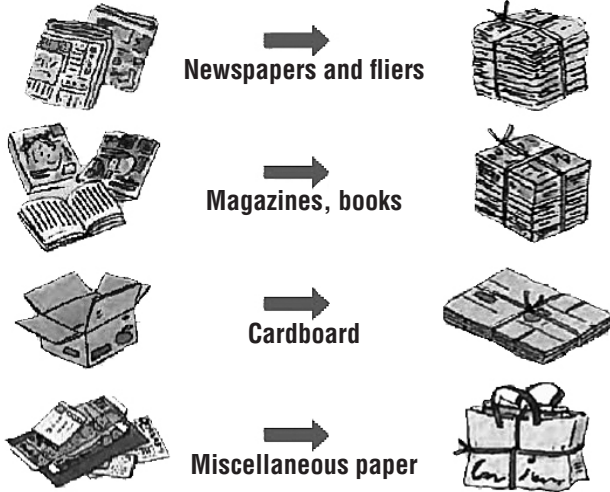
- ◆ Colored plastic PET bottles
- ◆ Items with the identifying PET mark that are not bottles
- ◆ Bottles without the identifying PET mark



4. Used Paper (collected once a week)

Note: Collected even on rainy days.

Bundle with string according to type before disposal.
Do not bundle with adhesive tape.



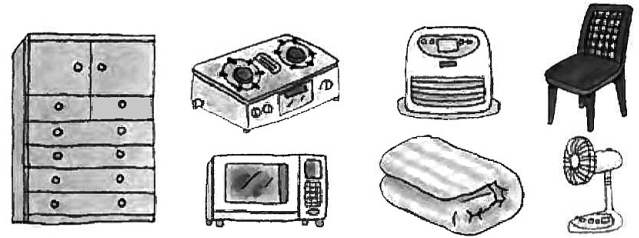
Items That Are Not Collected as Used Paper (dispose with burnable garbage)

Adhesive tape, items made of material other than paper (such as plastic film), paper cups, plastic coated paper, thermal paper/carbon paper, and paper that is dirty (with oil, etc.)

Note: Please cooperate with neighborhood groups in their used paper collection drives.

5. Oversized Garbage (please call to arrange a pickup date)

Items as large as or larger than a cube of 30 cm on all sides are considered oversized garbage.
Please call in advance to arrange pickup.



Application (to arrange a pickup date or for information on fees)

Oversized Garbage Reception Center
Tel: 5296-7000

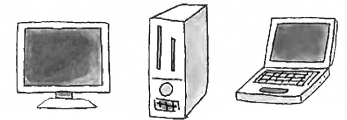
Note: Oversized items that were used in business cannot be collected.



There is a fee for the collection of oversized garbage.

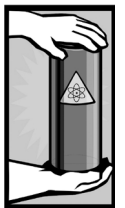
• Recycling of Computers and Household Appliances

A recycling fee is required for used personal computers that do not bear the identifying recycling mark. Please call the product's manufacturer concerning collection procedures. In addition, used TVs, refrigerators/freezers, air conditioners, and laundry machines/dryers must be recycled by law. To dispose of these items, you must either ask the store where you originally purchased the item or the store where you are buying a replacement to handle your used appliance. If you are unable to get a store to help you, please call the Household Appliance Recycling Reception Center.



• Hazardous/Dangerous Items (such as gas cassettes, kerosene, and chemicals)

The city does not collect items that are difficult to handle (such as automobiles [including parts], motorcycles, tires, fire extinguishers, soil, liquids, bricks, and concrete blocks). Please consult Kita City Waste Collection Office.



Please observe the following rules:

1. Dispose of items according to type at the garbage collection station no later than 8 a.m. on the designated collection day. The collection schedule varies depending on the neighborhood where you live.
2. There is a collection fee if you have a lot of garbage (five or more 45-liter garbage bags). Please consult the Waste Collection Office.
3. Do not leave items that are not for collection in or near the garbage collection station.
4. Dog and cat carcasses are collected for a fee. Please consult the Waste Collection Office.
5. When disposing of business-related burnable or unburnable garbage, or used paper, please attach the Kita City garbage collection fee sticker.

Notes: 1. Please be sure to consult the Waste Collection Office concerning other garbage-related questions rather than deciding on matters yourself, such as whether certain items can be collected, whether there is a pickup service for the item, and whether there is a collection fee.

2. Illegal garbage disposal is punishable by law (five years or less in jail, or a fine of ¥10,000,000 or less, or both).

Inquiries:

Recycling and Waste Management Section	Tel: 3908-8539
Kita City Waste Collection Office	Tel: 3913-3141
Takinogawa Waste Collection Building (handling trash collection for the Takinogawa district)	Tel: 3800-9191
Household Appliance Recycling Reception Center	Tel: 5296-7200



International Exchange at the Hometown Kita City Citizens' Festival

Many people came to the City Residents' Festival on October 4 (Sat.) and 5 (Sun.) at Asukayama Park, and the crowd was still full of energy and enthusiasm when the event ended on Sunday.

The tent at International Fureai Plaza in Asukayama Park where foods and folk arts from countries around the world were sold was popular and filled with people. In addition, a cultural exchange group came to Japan this year from the Xicheng District of Beijing, China, with which Kita City has a friendship city relationship. The group made the event even more exciting by demonstrating Tai Chi Chuan, the art of paper cutting, painting and calligraphy, which are all aspects of traditional Chinese culture.



International Fureai Plaza



Painting and calligraphy demonstrations by instructors



Tai Chi Chuan demonstration



Traditional Chinese culture, paper-cutting art



A Request to All Dog Owners

Dogs are intelligent animals, and raising them properly will make them good partners for life. Please bear in mind the importance of disciplining your dog properly so that he/she will not be a nuisance to your neighbors.

Rules When Taking Your Dog for a Walk

- Have your dog poop and pee before going for a walk if possible
- If your dog poops elsewhere, please collect it and take it home for disposal
- Keep a plastic bottle of water with you in case your dog pees, and flush the area with water immediately
- Keep your dog on a leash, and keep the leash short. If you use a retractable leash, please be extra careful about your dog's actions.

If Your Dog Bites Someone

- Take care of any injuries
- Think of ways to keep such incidents from happening again
- File a report with the public health center within twenty-four hours
- Take your dog to the veterinarian for an examination within forty-eight hours

